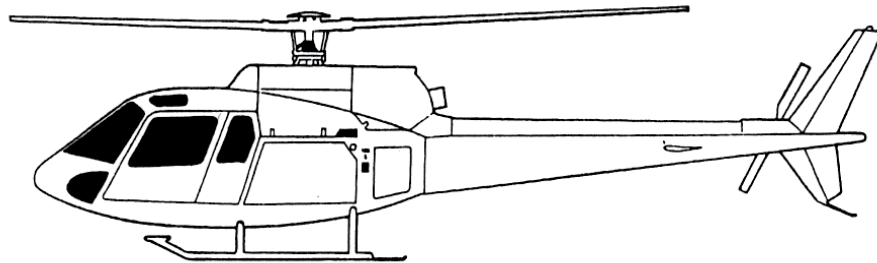


**EXTERNAL  
ATTACH FRAME  
A-STAR / TWINSTAR  
INSTALLATION MANUAL**



**Tyler - External Attach Frame**  
For Eurocopter AS-350 & AS-355 series helicopters  
FAA STC # SR01652LA



**PLEASE RETURN THIS MANUAL WITH EQUIPMENT**



Tyler Camera Systems 14218 Aetna Street Van Nuys, California 91401 • USA  
(818) 989-4420 • FAX (818) 989-0423 • [www.tylermount.com](http://www.tylermount.com)



**SECTION 1**  
**Fast Rope Assembly to TSOP**  
**Installation**



**RIGHT SIDE SHOWN**



**View of transmission compartment wth top “Y” brace installed.  
RIGHT SIDE SHOWN**



**Remove two bolts from transmission cowl latch retainer. Install top  
“Y” bracket and re-install the two bolts loosely.  
RIGHT SIDE SHOWN**



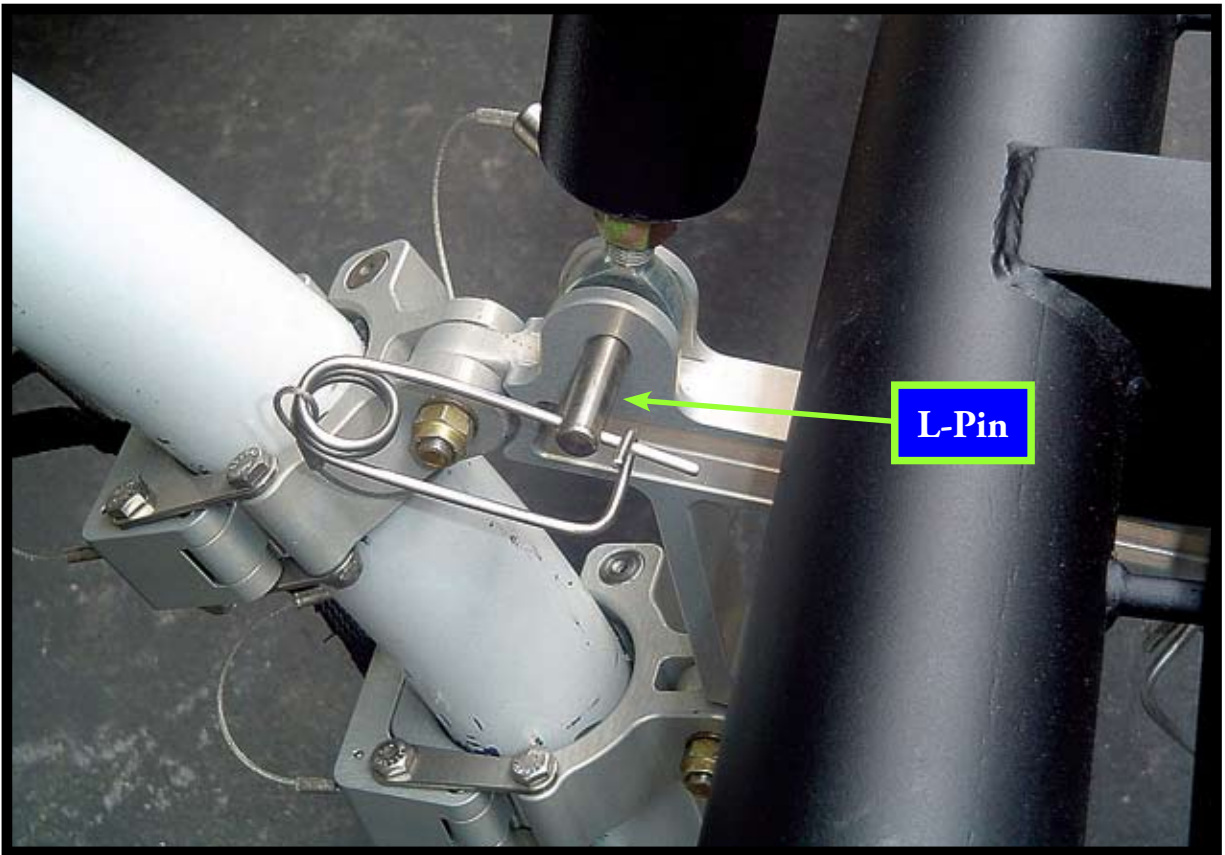
**Remove nut from bulkhead bracket, back out bolt and install top “Y” bracket.  
RIGHT SIDE SHOWN**



**Install clevis on transmission mount with supplied bolt.  
Now you may tighten all three points  
RIGHT SIDE SHOWN**



**Mark as shown & notch engine cowl for top “Y” brace.**



### **FAST ROPE ARM**

Bottom of arm attaches to TSOP front skid gear clamp with L-pin.

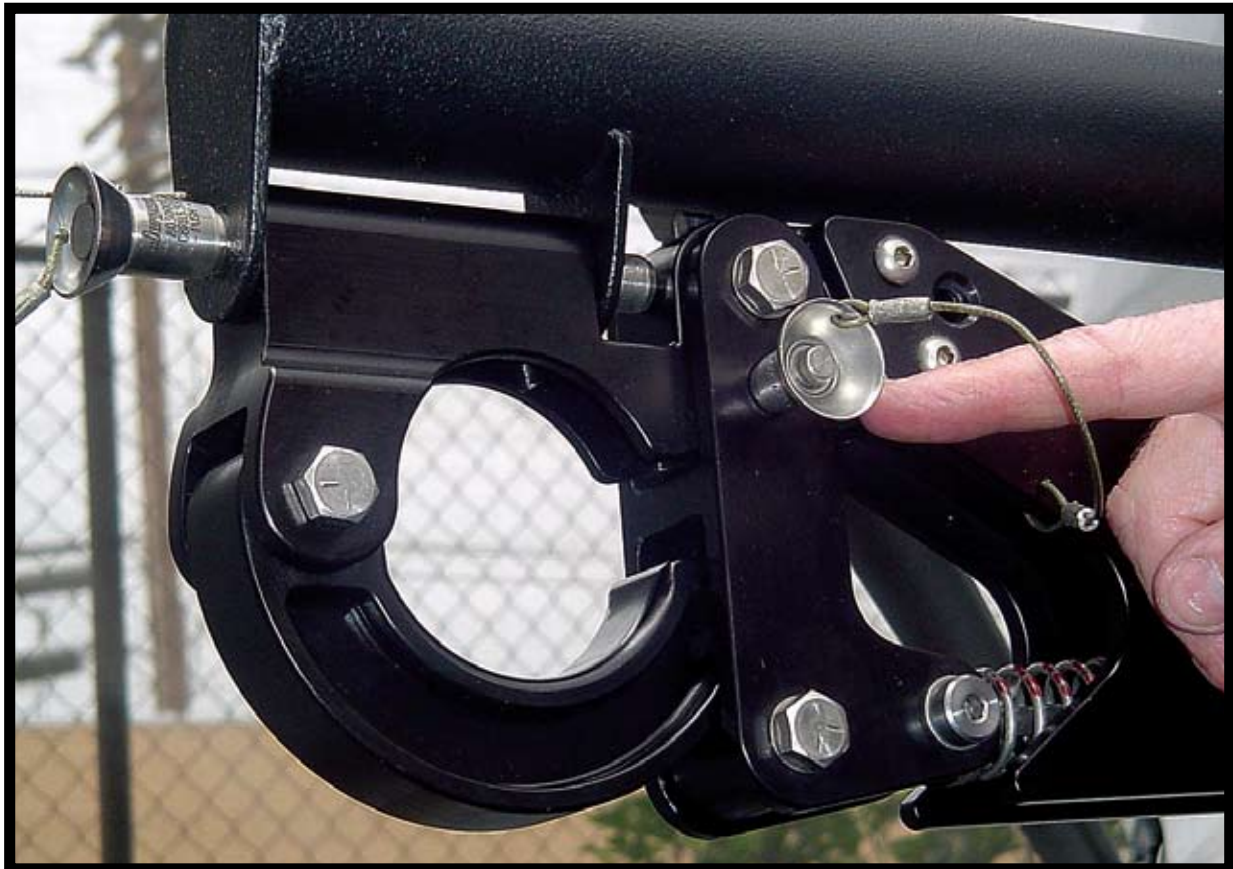


Install upper brace from top "Y" bracket to top tab on arms with PIP pins





Large PIP pin holds hook assembly onto arm



PIP pin location to lock hook release.



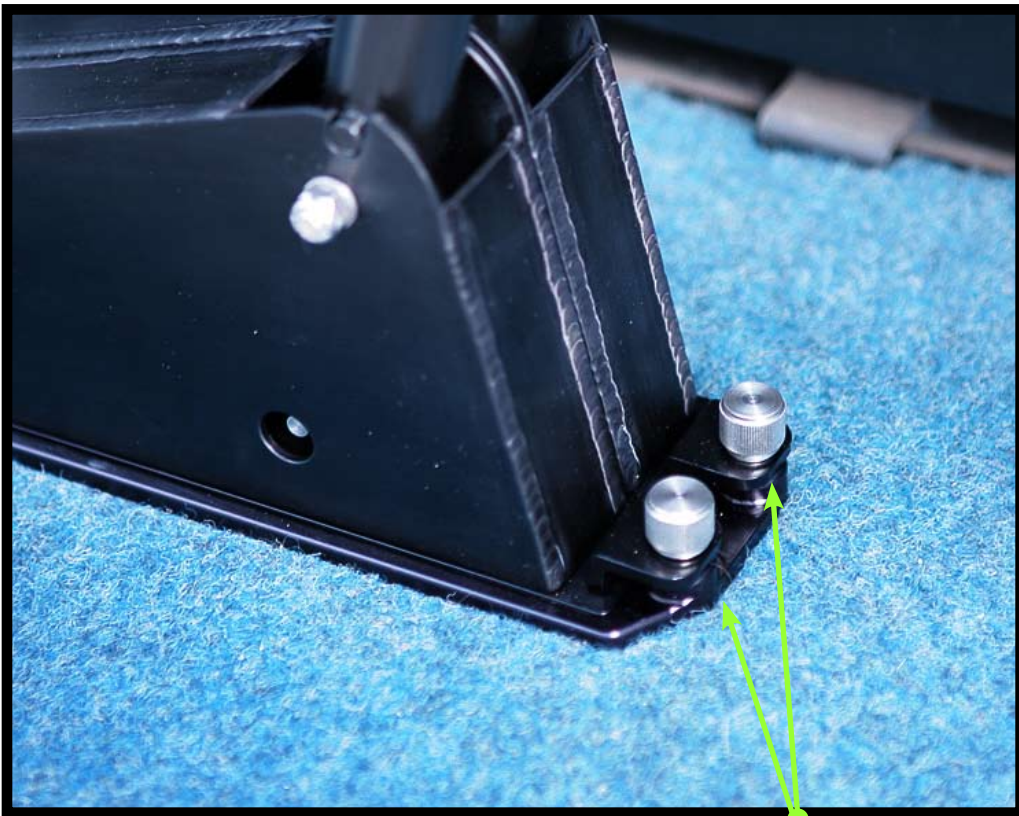
Mounting plate for release handle



Mounting plate bottom view



Hook release handle. (Left & right side)



Hook release handle lock-down knobs



Hook release handle, left side



Hook release handle, right side

**SECTION 2**  
**Fast Rope Assembly to Skid Gear**  
**Installation**



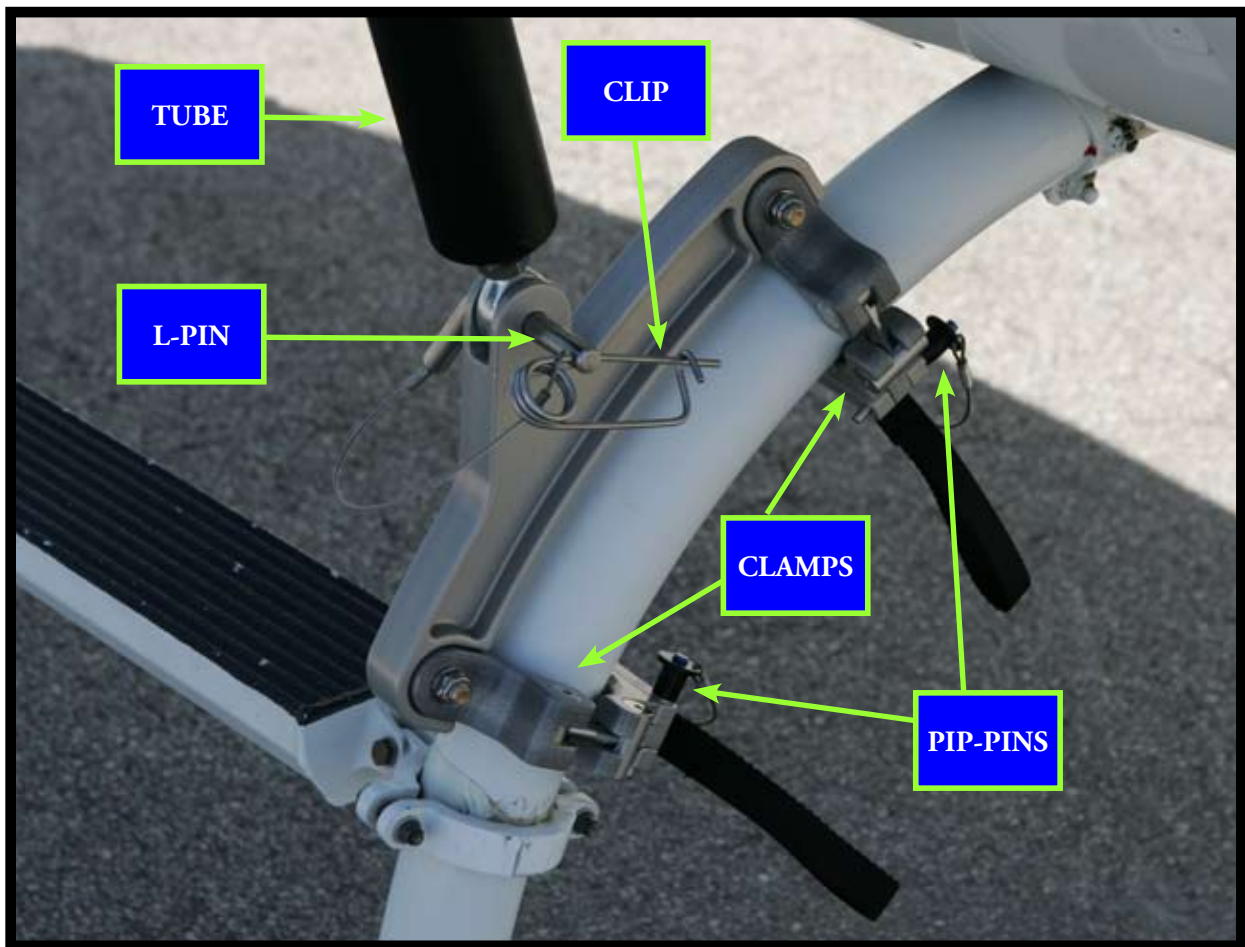
**RIGHT SIDE SHOWN**

Note: A-frame brace installation is the same as pages 4-8

## FAST ROPE ARM

Attach skid gear clamp as shown, adjusting clamps as needed to get a snug/tight fit. Secure with PIP-pins

Next attach the bottom of the main Fast-Rope support tube to the Skid Gear Clamp assembly using the L-pin. Secure with the safety clip.



## **FAST ROPE TO SKID GEAR INSTALLED WITH HOOK & RELEASE**

Refer to pages 13-16 for hook & release installation





U.S. Department  
of Transportation

**Federal Aviation  
Administration**

NOV 02 2004

Tyler Camera Systems  
Mr. Nelson Tyler, President  
14218 Aetna Street  
Van Nuys, California 91401

**Transport Airplane Directorate  
Los Angeles Aircraft  
Certification Office**

3960 Paramount Boulevard  
Lakewood, California 90712-4137

Dear Mr. Tyler:

Supplemental Type Certificate (STC) No. SR01652LA Installation  
of Tyler Camera Systems External Attach Frame in Eurocopter France  
AS350 and AS355 Series Helicopters

We have completed our evaluation of the subject change in type design and are enclosing your Supplemental Type Certificate No SR01652LA, a copy of FAA Approved Master Drawing List No. LU-001, Revision A, dated July 2, 2004, and a copy of FAA Approved Rotorcraft Flight Manual Supplement No. LU-RFM-001, Revision No. N/C, dated October 28, 2004.

This certificate signifies approval of the type design change and authorizes modification of the aircraft models listed on the certificate. A copy must be included with each kit you issue or each time you make the data available to other persons who intend to make the subject alteration. The certificate may be transferred or made available to others by means such as a licensing arrangement in accordance with FAR 21.47.

For your information, you are required to maintain an updated file related to this STC. If you plan to manufacture replacement or modification parts for sale or in conformance with approved data listed on the certificate, you are required to comply with Federal Aviation Regulations (FAR), Parts 21.303 and 45.15. Application for Parts Manufacturer Approval (PMA) should be made in writing with reference to this STC and addressed to: Van Nuys Manufacturing Inspection District Office, 7120 Hayvenhurst Avenue, Suite 100, Van Nuys, California 91406. Please note that FAR 21.303(g) specifies that the FAA does not issue a PMA if the manufacturing facility for the part is located outside of the United States, unless a determination is made that the location of the manufacturing facility places no burden on the FAA administering the applicable airworthiness requirements.

In accordance with FAR Part 21.3, and as a recipient of this certificate, you are required to report any failure, malfunction or defect, except as provided in FAR Part 21.3(d), in any product or part manufactured by you or your contracted suppliers, and which you have determined has resulted or could result in any occurrence listed in FAR Part 21.3(c). The report should be communicated initially by telephone to the Manager, Airframe Branch, Los Angeles Aircraft Certification Office, phone no: (562) 627-5220, within 24 hours after it has been determined a failure has



occurred and followed up with a written notice to the address shown above. FAA Form 8010-4 (malfunction or defect report) or other appropriate format is acceptable in transmitting the required details.

You, as the STC holder, are responsible for any design changes necessary to correct unsafe conditions as well as for submitting those design changes to this office for approval. This requirement is contained in FAR 21.99. In addition, you are required to advise this office of any change of address or ownership.

Also, FAR 21.50 requires that maintenance procedures for continued airworthiness, as applicable to this change in type design, be made available to the operator at the time the aircraft is returned to service. By accepting this certificate, you acknowledge that you have read and understand your responsibilities as an STC holder.

Sincerely,

A handwritten signature in black ink, appearing to read "G. DiLibero", written in a cursive style.

Gregory S. DiLibero  
Manager, Airframe Branch

3 Enclosures

United States Of America  
Department of Transportation - Federal Aviation Administration

# Supplemental Type Certificate

*Number* SR01652LA

*This Certificate issued to* Tyler Camera Systems  
14218 Aetna Street  
Van Nuys, California 91401

*certifies that the change in the type design for the following product with the limitations and conditions therefor as specified hereon meets the airworthiness requirements of Part \* of the Federal Aviation Regulations. \**

*Original Product Type Certificate Number :* \*\* See attached FAA Approved Model List (AML)

*Make :* No. SR01652LA for list of approved rotorcraft

*Model :* \* models and applicable airworthiness regulations.

*Description of Type Design Change:*

Installation of External Attach Frame in accordance with FAA Approved Tyler Camera Systems Master Drawing List No. LU-001, Revision A, dated July 2, 2004, and a copy of FAA Approved Rotorcraft Flight Manual Supplement No. LU-RFM-001, Revision No. N/C, dated October 28, 2004 or later FAA Approved Revisions.

*Limitations and Conditions:* Approval of this change in type design applies to the aircraft models listed on AML No. SR01652LA only. This approval should not be extended to aircraft of this model on which other previously approved modifications are incorporated unless it is determined that the relationship between this change and any of those other previously approved modifications, including changes in type design, will introduce no adverse effect upon the airworthiness of that aircraft. (Continued)

*This certificate and the supporting data which is the basis for approval shall remain in effect until surrendered, suspended, revoked or a termination date is otherwise established by the Administrator of the Federal Aviation Administration.*

*Date of application :* August 15, 2003

*Date reissued :*

*Date of issuance :* November 3, 2004

*Date amended :*



*By direction of the Administrator*

*[Signature]*  
(Signature)

Manager, Airframe Branch  
Los Angeles Aircraft Certification Office

(Title)

Any alteration of this certificate is punishable by a fine of not exceeding \$1,000, or imprisonment not exceeding 3 years, or both.

INSTRUCTIONS: The transfer endorsement below may be used to notify the appropriate FAA Regional Office of the transfer of this Supplemental Type Certificate.

The FAA will reissue the certificate in the name of the transferee and forward it to him.

---

---

### TRANSFER ENDORSEMENT

Transfer the ownership of the Supplemental Type Certificate Number \_\_\_\_\_

to *(Name of transferee)* \_\_\_\_\_

*(Address of transfer)* \_\_\_\_\_

*(Number and street)*

\_\_\_\_\_  
*(City, State, and Zip code)*

from *(Name of grantor)* *(Print or type)* \_\_\_\_\_

*(Address of grantor)* \_\_\_\_\_

*(Number and street)*

\_\_\_\_\_  
*(City, State, and Zip code)*

Extent of Authority (if licensing agreement): \_\_\_\_\_

\_\_\_\_\_

\_\_\_\_\_

\_\_\_\_\_

Date of Transfer: \_\_\_\_\_

Signature of grantor *(In ink)*: \_\_\_\_\_

---

*Any alteration of this certificate is punishable by a fine of not exceeding \$1,000, or imprisonment not exceeding 3 years, or both.*

United States Of America  
Department of Transportation - Federal Aviation Administration  
**Supplemental Type Certificate**  
(Continuation Sheet)

*Number* SR01652LA

Limitations and Conditions (Continued):

The provisions of the Supplemental Type Certificate are applicable only to those aircraft which are listed on the attached FAA Approved Model List of Eurocopter France Helicopter models.

This external attach frame is approved for a maximum payload weight of not more than 360 pounds per hook. The bi-pod frame may be left in place when the external frame is removed. The external attach frame may be installed on either or both sides of the aircraft.

The external attach frame maybe used in conjunction with Tyler Cargo Rack System STC No. SR01449LA.

A copy of this Certificate and FAA Approved Model List (AML) No. SR01652LA, dated November 3, 2004, or later FAA Approved revision, must be maintained as part of the permanent records for the modified aircraft. If the holder agrees to permit another person to use this certificate to alter the product, the holder shall give the other person written evidence of that permission.

- END -

---

*Any alteration of this certificate is punishable by a fine of not exceeding \$1,000, or imprisonment not exceeding 3 years, or both.*

FAA APPROVED MODEL LIST ( AML ) NO. SR01652LA  
 TYLER CAMERA SYSTEMS

FOR

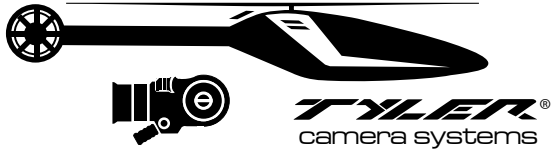
INSTALLATION OF EXTERNAL ATTACH FRAME ON HELICOPTER MODELS LISTED

ISSUE DATE : November 3, 2004

ITEM	AIRCRAFT MAKE	AIRCRAFT MODEL	ORIGINAL TYPE CERTIFICATE NUMBER	CERTIFICATION BASIS FOR ALTERATION	MASTER DWG. LIST		INSTALLATION INSTRUCTIONS		RFM SUPPLEMENT NUMBER/REV. NO. & DATE	AML AMENDMENT DATE
					REPORT NO.	REV. NO. & DATE	REPORT NO.	REV. NO. & DATE		
1	EUROCOPTER FRANCE	AS350-C AS350-D AS350-D1 AS350-B AS350-B1 AS350-B2 AS350-B3 AS350-BA	H9EU	FAR 27 AND AMENDMENTS LISTED ON TCDS H9EU	LU-001	REV. A 6/24/04	INSTLU-001	REV. N/C 6/24/04	REV. N/C 10/28/04	N/A
2	EUROCOPTER FRANCE	AS355E AS355F AS355F1 AS355F2 AS355N	H11EU	FAR 27 AND AMENDMENTS LISTED ON TCDS H11EU	LU-001	REV. A 6/24/04	INSTLU-001	REV. N/C 6/24/04	REV. N/C 10/28/04	N/A



FAA APPROVED :  
 MANAGER, AIRFRAME BRANCH  
 LOS ANGELES AIRCRAFT CERTIFICATION OFC.



MODELS: EUROCOPTER AS-350 & AS-355      REPORT #: INSTLU - 001  
 JOB #: \_\_\_\_\_      DATE: 3-11-03

**EXTERNAL ATTACH FRAME**

INSTALLATION MANUALS FOR

EUROCOPTER FRANCE 350 & 355 SERIES HELICOPTERS

PREPARED BY: G. WOOD      # OF PAGES: \_\_\_\_\_  
 \_\_\_\_\_  
 CHECKED BY: N. TYLER      # OF DRAWINGS: 0  
3-21-03  
 APPROVED BY: \_\_\_\_\_

REVISIONS

DATE	PAGES AFFECTED	REVISION LETTER		APPROVAL
6-24-04	ALL	NC	ORIGINAL ISSUE	
8-23-06	ALL			